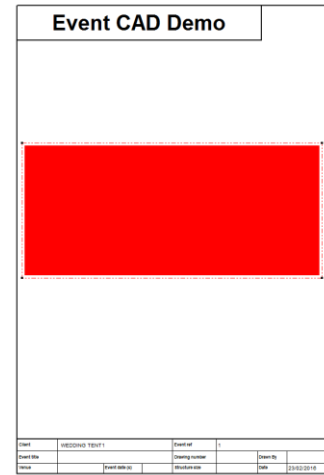


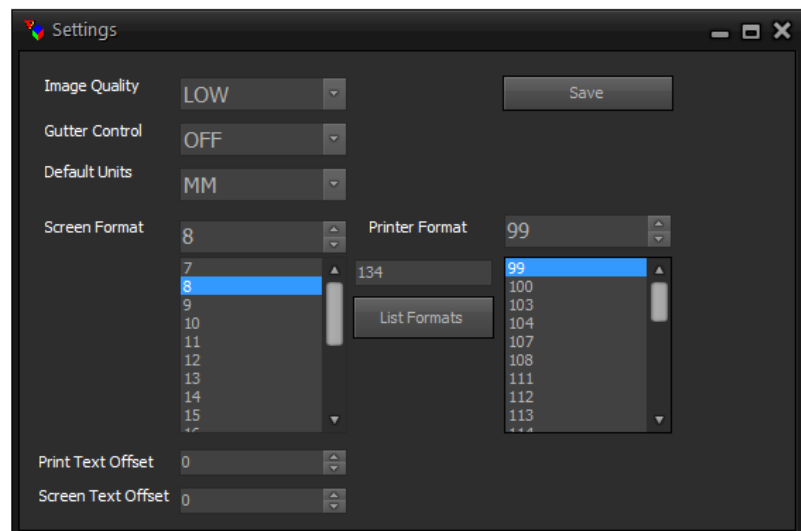
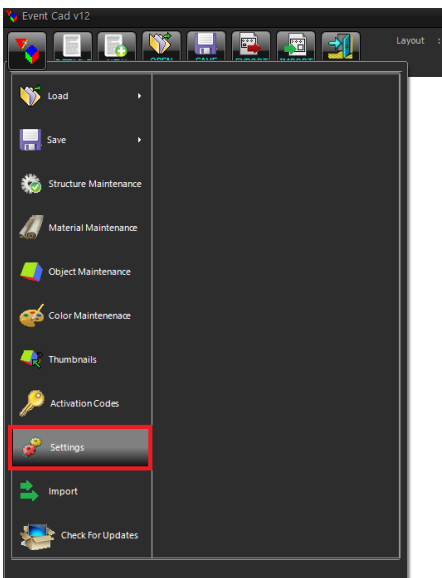
If you have not done this already after downloading the software, you will need to **change the default units** of your EventCAD in order to prevent future errors or to stop existing ones (e.g. if there is a red square appearing when you visualise your drawing or try to print it) :



Go into **Maintenance** (the coloured logo in the top left hand corner) and select **Settings** :

In the window that then appears, set the following fields :

- Image Quality to **LOW**
- Gutter Control to **OFF**
- Default Units to **MM**
- Double Click on the **Second number** in the list below Screen Format
- Double Click on the **First number** in the list below Printer Format



Select **Save**, then you must **restart EventCAD** for these changes to be applied correctly.