



Please follow the full instruction below to install the software and use the checklist to make sure you don't miss any steps.

CHECKLIST	
Ensure .Net is installed*, UAC is switched off* and Antivirus is disabled (where applicable)	<input type="checkbox"/>
Install the program using the latest install from our website.	<input type="checkbox"/>
Exclude programs from Anti-Virus	<input type="checkbox"/>
Copy the programs folder from the original machine	<input type="checkbox"/>
Set up the IP and datapath	<input type="checkbox"/>
Turn Anti-Virus back on	<input type="checkbox"/>
Configure the ODBC	<input type="checkbox"/>
Open port 3050 on the firewall of the original machine	<input type="checkbox"/>

To install allHire onto a Windows 8.1 or 10 then you need to make sure .net compatibility is turned on, to do this Click on the Windows Start button then type **programs a** into the search box. Click **“Programs and Features”** in the search results.

In the window that opens select **“Turn Windows Features On/Off”**. Select the .net framework 3.5 box. Press Okay and download if needed.

You also need to disable the User Account Control before installation. Click on the Windows Start button then type **UAC S** into the search box. Click **“Change User Account Control Settings”** in the search results. In the window that opens drag the slider to the bottom (Never Notify). Click OK then restart your machine.

The 2 machines need to be on the same network and visible to each other

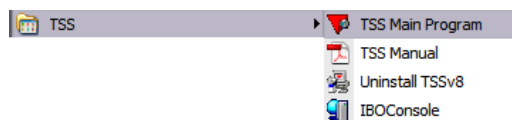
If you can, turn off your antivirus before installing the program.

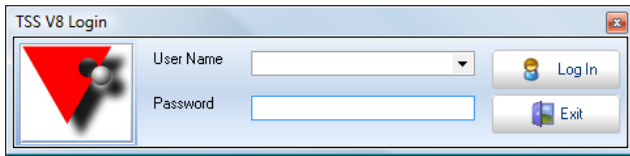
Go to the downloads page on our [web site](#) and click on the “all Hire 8 Demo and install”. Once the install has downloaded browse to your downloads folder and double click on the TSSv8Setup.exe

Once the program has installed remove the tick from the box saying ‘run TSS now’ and click close then install the ODBC (which will follow on automatically. It is advisable to add exclusions to your antivirus program so that it will not check the entire program folder C:\program files\tss (on a 64 bit machine c:\program files(x86)\tss). (If you are not sure how to do this yourself, check with your IT company.)

Next you need to copy the programs folder from the original machine. Unless you set up a different location when you first installed, these are all located in C:\program files\tss\Bin (on a 64 bit machine c:\program files(x86)\tss\Bin). Rather than copy these individually you can copy the entire Bin folder and replace the one on the new machine.


To run the program there should be a shortcut on the desktop. If you can't find this, go to your Start Menu, select all programs, find TSS in the list and then select TSS Main Program.





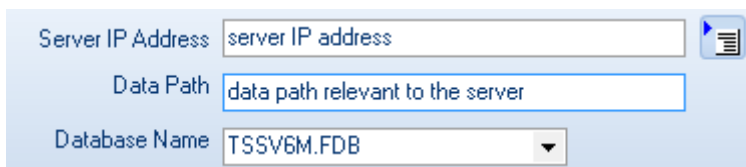
Click on the drop arrow to the right of the user name to enter the IP address of the original machine and Data Path (copy the data path from the original machine exactly, do not forget the last / in the data path).

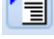
To find the IP address of the original machine go to that machine.

Hold the **windows key** down and press R on the keyboard  then type **cmd** in the box and press return.

In the window type **ipconfig** press return and look for the IPV4 address. **192.168.1.64** for example.

This is the IP address that needs to be entered in to the server IP address field.



When you have entered this, click on the  to save these details.

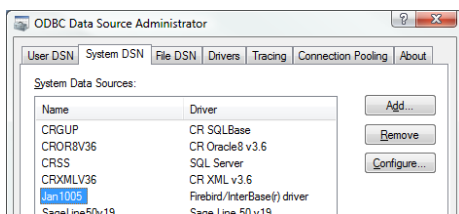
You can now turn your antivirus back on if you disabled it.

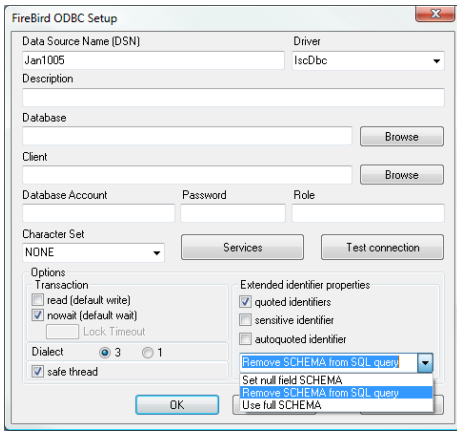
The final part to configure is the ODBC link (this is the link between the data and the reports)

If you are running a 32 bit machine then open your control panel and select administrative tools and then data sources (ODBC).

If you have a 64 bit machine browse to c:\windows\syswow64\odbcad32.exe.

Go to the System DSN tab and select Jan1005 from the list and then press the *Configure* button.





The only setting you need to alter is from the drop down box at the bottom right. Change this from *Set null field SCHEMA* to *Remove SCHEMA from SQL query*.

Press the OK button on each screen to close this section down and save the changes.

On the original machine you need to open port 3050 on the firewall (talk to your IT about this if you are unsure).

Now enter your username and password at the TSS Login screen and press the tick button. (If you don't have a username and password, see your network administrator.)

